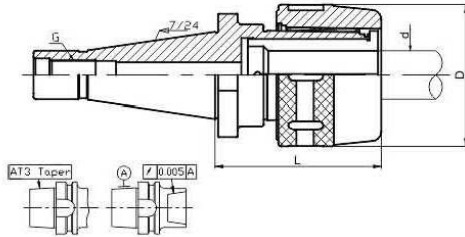


EMC
EMC POWERFUL MILLING HOLDERS - NT SHANK



| Order Code | ØD | L | Ød Clamping range | G (inch) | (Kg) Weight |
|---------------|------|----|----------------------|------------|----------------|
| NT40-EMC32-90 | 73.5 | 90 | 6-32 | 5/8"-11UNC | 2.1 |
| NT50-EMC32-90 | 73.5 | 90 | 6-32 | 1"-8UNC | 4.0 |

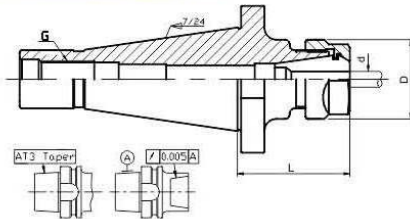
The collet and spanner are not included, please order them additionally if necessary. The tool package of whole set is available on request. (include a spanner and 7 collets)



NT Shank

G M I K

ER
ER COLLET HOLDERS - NT SHANK

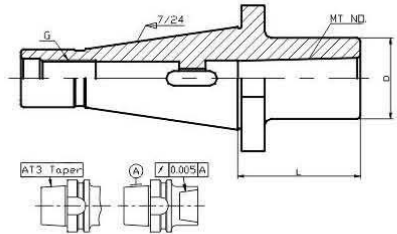


| Order Code | ØD | L | Ød Clamping range | G(inch) | (Kg) Weight |
|------------------|----|----|----------------------|-----------|----------------|
| NT30-ER32(12)-60 | 50 | 60 | 2.0-20 | 1/2-12UNC | 0.8 |
| -ER32(13)-60 | | | | 1/2-13UNC | 0.8 |
| NT40-ER32-50 | 50 | 50 | 2.0-20 | 5/8-11UNC | 1.0 |
| -ER40-50 | 63 | 50 | 3.0-26 | | 1.2 |
| NT50-ER32-50 | 50 | 50 | 2.0-20 | 1-8UNC | 3.1 |
| -ER40-50 | 63 | 50 | 3.0-26 | | 2.9 |

The above model does not contain spanners and collets, please order them additionally if necessary.



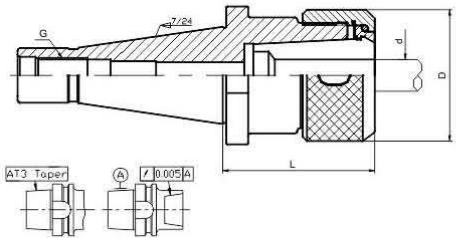
MTA MORSE TAPER HOLDERS - NT SHANK



NT Shank

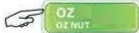
| Order Code | MT NO . | L | øD | G | (Kg) Weight |
|--------------|---------|-----|----|----------|----------------|
| NT50-MTA1-45 | 1 | 45 | 25 | 1" -8UNC | 2.7 |
| -120 | | 120 | | | 3.0 |
| -MTA2-45 | 2 | 45 | 35 | | 2.7 |
| -135 | | 135 | | | 3.4 |
| -MTA3-45 | 3 | 45 | 42 | | 2.7 |
| -150 | | 150 | | | 3.8 |
| -MTA4-75 | | 75 | | | 2.9 |
| -190 | 4 | 190 | 50 | | 4.3 |

OZ COLLET HOLDERS - NT SHANK



| Order Code | ØD | L | ød Clamping range | G(inch) | (Kg) Weight |
|-------------------|----|----|----------------------|-------------|----------------|
| NT30-OZ25(12) -70 | 60 | 70 | 6-25 | 1/2" -12UNC | 1.0 |
| -OZ25(13) -70 | | | | 1/2" -13UNC | 1.0 |
| NT40-OZ25-70 | | | 6-25 | 5/8" -11UNC | 1.4 |
| -OZ32-70 | 78 | | 6-32 | | 2.0 |
| NT50-OZ25-80 | 60 | 80 | 6-25 | 1" -8UNC | 3.4 |
| -OZ32-80 | 78 | | 6-32 | | 4.1 |

The above model does not contain spanners and collets ,please order them additionally if necessary.



FMA FACE MILL HOLDERS - NT SHANK

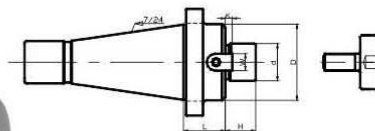


FIG 1

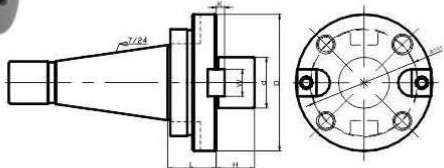
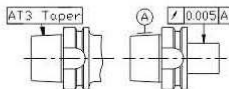


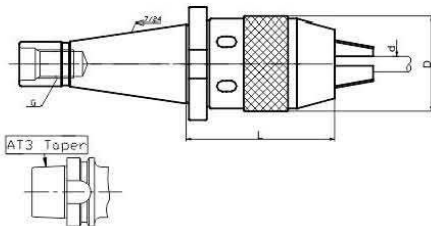
FIG 2



NT Shank

| Order Code | FIG | L | ød(h6) | øD | H | K | W | (Kg) Weight |
|-----------------|-----|----|--------|------|--------|-----|------|----------------|
| NT30-FMA25.4-20 | 1 | 20 | 25.4 | 50 | 20 | 5 | 9.5 | 0.7 |
| -FMA31.75-25 | | 25 | 31.75 | 60 | 22 | 7 | 12.7 | 1.0 |
| -FMA38.1-30 | | 30 | 38.1 | 80 | 25 | 9 | 15.9 | 1.5 |
| NT40-FMA25.4-25 | 1 | 25 | 25.4 | 50 | 20 | 5 | 9.5 | 1.2 |
| -FMA31.75-25 | | | 31.75 | 60 | 22 | 7 | 12.7 | 1.4 |
| -FMA38.1-30 | | 30 | 38.1 | 80 | 25 | 9 | 15.9 | 2.0 |
| -FMA50.8-35 | | | 35 | 50.8 | 100 | 28 | | 12 |
| NT50-FMA25.4-35 | 1 | 35 | 25.4 | 50 | 20 | 5 | 9.5 | 3.2 |
| -FMA31.75-35 | | | 31.75 | 60 | 22 | 7 | 12.7 | 3.4 |
| -FMA38.1-35 | | | 38.1 | 80 | 25 | 9 | 15.9 | 4.0 |
| -FMA50.8-35 | | | 50.8 | 100 | 28 | 12 | | 4.8 |
| -FMA47.625-45 | | | 2 | 45 | 47.625 | 128 | | 32 |

KPU DRILL CHUCK HOLDERS - NT SHANK



| Order Code | L | ØD | Clamping range | G | (Kg) Weight |
|------------|------|----|----------------|-------------|----------------|
| NT30-KPU08 | 70 | 36 | 0.5-8 | 1/2" -12UNC | 0.7 |
| -KPU13 | 85.5 | 50 | 0.5-13 | | 1.2 |
| NT40-KPU08 | 70 | 36 | 0.5-8 | 5/8" -11UNC | 1.1 |
| -KPU13 | 85 | 50 | 0.5-13 | | 1.6 |
| -KPU16 | 105 | 57 | 3-16 | | 2.3 |
| NT50-KPU13 | 95 | 50 | 0.5-13 | 1" -8UNC | 3.9 |
| -KPU16 | 100 | 57 | 3-16 | | 4.2 |

NT Shank