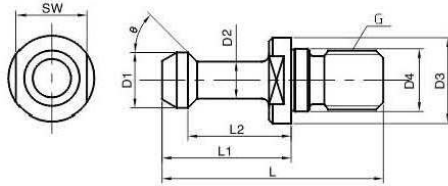


BT
PULL STUDS BT (MAS403)



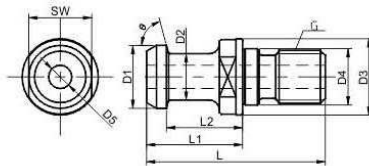
Order Code	L	L1	L2	ØD1	ØD2	ØD3	ØD4	θ	G	SW
S20R-2	34.5	20.5	16	9.5	7	14	8.5	90°	M8	10
BT30-45°	43	23	18	11	7	16.5	12.5	45°	M12	13
								60°		
BT40-45°	60	35	28	15	10	23	17	45°	M16	19
								60°		
								90°		
BT50-45°	85	45	35	23	17	38	25	45°	M24	30
								60°		
								90°		

BT pull studs can be supplied with through coolant as optional ,please contact with us for quotation.



If you need internal coolant type, please maked with "H" to the order code.

JIS B6339
PULL STUDS - JIS B6339



Pull Stud

Type P is for standard MAS BT tool holders; Type PA&PB is for SK(DIN69871) tool holders.

Order Code	L	L1	L2	ØD1	ØD2	ØD3	ØD4	ØD5	θ	G	SW
JIS B6339-30P	43	23.4	18.4	12	8	16.5	12.5	4	75°	M12	13
-40P	54	29	23	19	14	23	17	7.0		M16	19
-50P	74	34	25	28	21	38	25	10		M24	30
-30PA	44	24	19	12	8	16	13	4.15		M12	14
-40PA	54	26	23	19	14	23	17	7.0		M16	19
-50PA	74	34	25	28	21	36	25	11.5		M24	30
-30PB	27.5	11.8	8.15	13.35	9.3	16.5	13	4.15	M12	13	
-40PB	44.5	16.4	11.15	18.95	12.95	22.5	17	7.35	M16	18	
-50PB	65.5	25.55	17.95	29.1	19.6	37	25	11.55	45°	M24	30