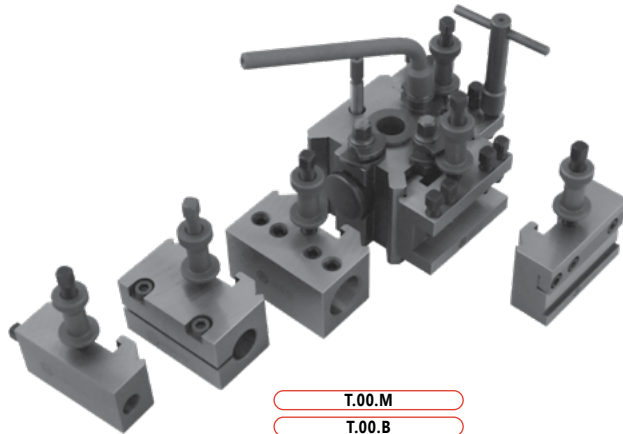


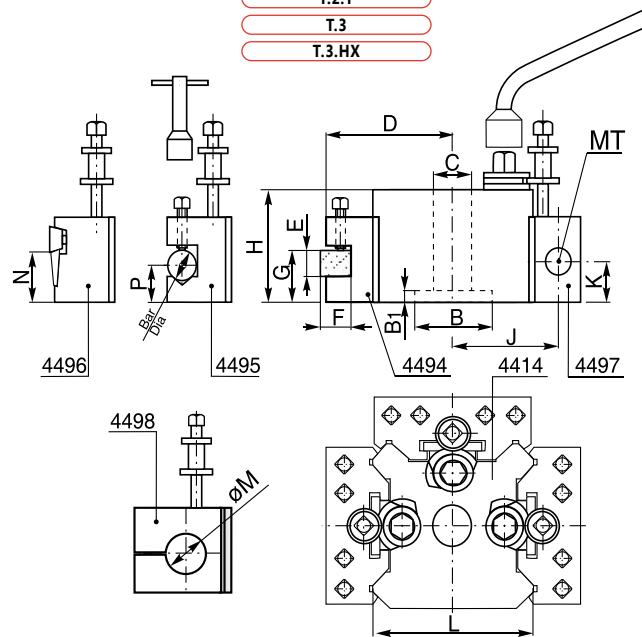
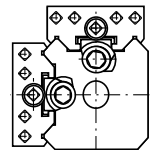
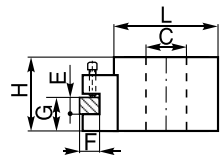
4414

- Schnellwechsel-Stahlhalter
- Quick change toolposts



- T.00.M
- T.00.B
- T.0

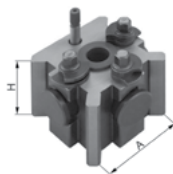
- T.1
- T.1.X
- T.2
- T.2.T
- T.3
- T.3.HX



Größe Size	H	B	B ₁	C	D	E	F	G max.	G min.	Bar Dia	P max.	P min.	MK MT	J	K max.	K min.	L	N	M
								G max.	G min.		P max.	P min.			K max.	K min.			
T.00.M	37,0	—	—	11,2	50,0	12	11,0	27,0	17,0	11,0	22,5	12,5	—	—	—	—	58,0	16,0	—
T.00.B	42,0	—	—	16,0	50,0	12	11,0	32,0	17,0	11,0	27,5	12,5	—	—	—	—	58,0	16,0	—
T.0	51,0	22,22	12,5	19,0	62,0	16	13,0	36,5	20,5	16,0	32,0	16,0	1	52,5	28,5	16,0	73,0	27,0	19,0
T.1	63,5	31,75	8,5	19,0	62,0	20	13,0	46,0	30,0	16,0	44,5	25,5	1	52,5	41,0	22,0	73,0	27,0	19,0
T.1.X	73,0	31,75	8,5	19,0	62,0	20	13,0	57,0	35,0	16,0	54,0	32,0	1&2	52,5	51,0	28,5	73,0	27,0	19,0
T.2	71,5	44,45	9,5	25,5	74,5	20	19,0	52,5	36,5	19,0	46,0	24,0	2	65,0	47,5	27,0	97,0	33,5	25,4
T.2.T	76,0	44,45	9,5	25,5	84,0	25	25,5	58,5	39,5	19,0	50,0	24,0	2	70,0	51,0	27,0	106,0	33,5	25,4
T.3	95,5	50,80	11,5	25,5	101,5	32	25,5	74,5	51,0	25,5	51,0	28,5	3	85,5	58,2	36,5	125,5	39,5	38,0
T.3.HX	108,0	50,80	11,5	25,5	101,5	32	25,5	84,0	62,0	25,5	65,0	41,0	3	85,5	58,2	36,5	125,5	39,5	38,0

4414

- Schnellwechsel-Stahlhalter
- Quick change toolposts



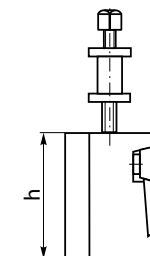
Artikel Nr. Code No.	Typ Type	A x H	Spannbereich Clamping range
800000651	T.00.M	48 x 37	bis zu/ up to 89 mm
800000652	T.00.B	48 x 42	bis zu/ up to 89 mm
800000653	T.0	62 x 51	bis zu/ up to 114 mm
800000654	T.1	62 x 63	114 mm bis/ up to 127 mm
800000655	T.1.X	62 x 73	114 mm bis/ up to 127 mm
800000656	T.2	82 x 71	127 mm bis/ up to 203 mm
800000657	T.2.T	82 x 76	127 mm bis/ up to 203 mm
800000658	T.3	100 x 92	203 mm bis/ up to 292 mm
800000659	T.3.HX	100 x 108	203 mm bis/ up to 292 mm

4496

- Standard Schnellwechseleinsatz
- Part off toolholders



Artikel Nr. Code No.	Grösse Size	Für Typ For Type	b x h
800000674	48	T.00M, T.00B	58 x 32
800000676	62	T.0,T.1, T.1X	73 x 47,5
800000677	82	T.2, T.2T	98,5 x 57
800000678	100	T.3, T3HX	124 x 70

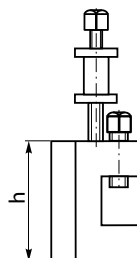


4494

- Standard Schnellwechseleinsatz
- Standard toolholders



Artikel Nr. Code No.	Grösse Size	Für Typ For Type	b x h
800000660	48	T.00M, T.00B	58 x 27
800000663	62N	T.0	73 x 35
800000662	62	T.1, T.1X	73 x 44
800000665	82N	T.2	98,5 x 50
800000664	82	T.2T	98,5 x 57
800000666	100	T.3, T.3HX	124 x 70

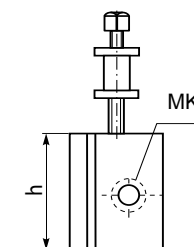


4497

- Schnellwechseleinsatz für Werkzeugze mit MK-Schaft
- Morse taper toolholders



Artikel Nr. Code No.	Grösse Size	Für Typ For Type	MK MT
800000680	62/1N	T.0	1
800000679	62/1	T.1, T.1X	1
800000681	62/2	T.1, T.1X	2
800000682	82/2	T.2, T.2T	2
800000683	100/3	T.3, T3HX	3

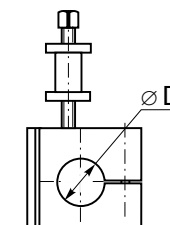


4498

- Schnellwechseleinsatz für Bohrstangenhalter
- Toolholders for boring bars



Artikel Nr. Code No.	Grösse Size	Für Typ For Type	ØD
800000684	62	T.0,T.1, T.1X	19
800000685	82	T.2, T.2T	25,4
800000687	100	T.3, T3HX	38

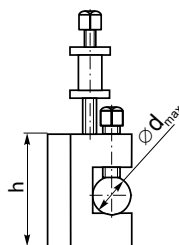


4495

- Schnellwechseleinsatz mit Prisma für runde Werkzeuge
- Vee type toolholders



Artikel Nr. Code No.	Grösse Size	Für Typ For Type	Ød _{max}	b x h
800000667	48	T.00M, T.00B	11,0	58 x 27
800000670	62N	T.0	16,0	73 x 35
800000669	62	T.1, T.1X	16,0	73 x 44
800000672	82N	T.2	19,0	98,5 x 50
800000671	82	T.2T	19,0	98,5 x 57
800000673	100	T.3, 3HX	25,5	124 x 70

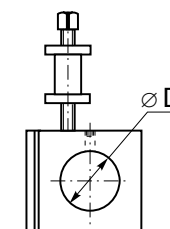


4499

- Schnellwechseleinsatz für Bohrstangenhalter
- Toolholders for boring bars



Artikel Nr. Code No.	Grösse Size	Für Typ For Type	ØD
800000688	62	T.0,T.1, T.1X	25
800000689	82	T.2, T.2T	32
800000690	100	T.3, T3HX	40



1

2

3

4

5

6

4499

4498

4497

4496

4495

4494

4414